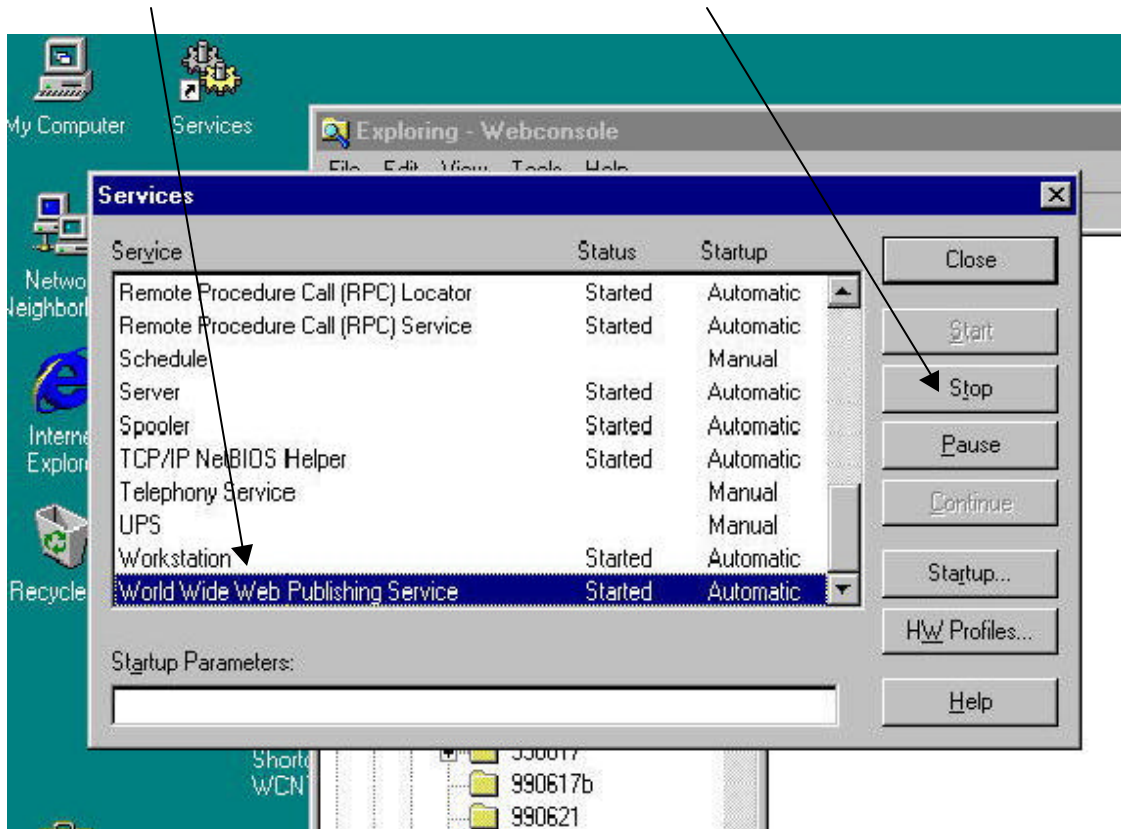


# WebConsole for NT INSTALLATION INSTRUCTIONS

## REQUIREMENTS

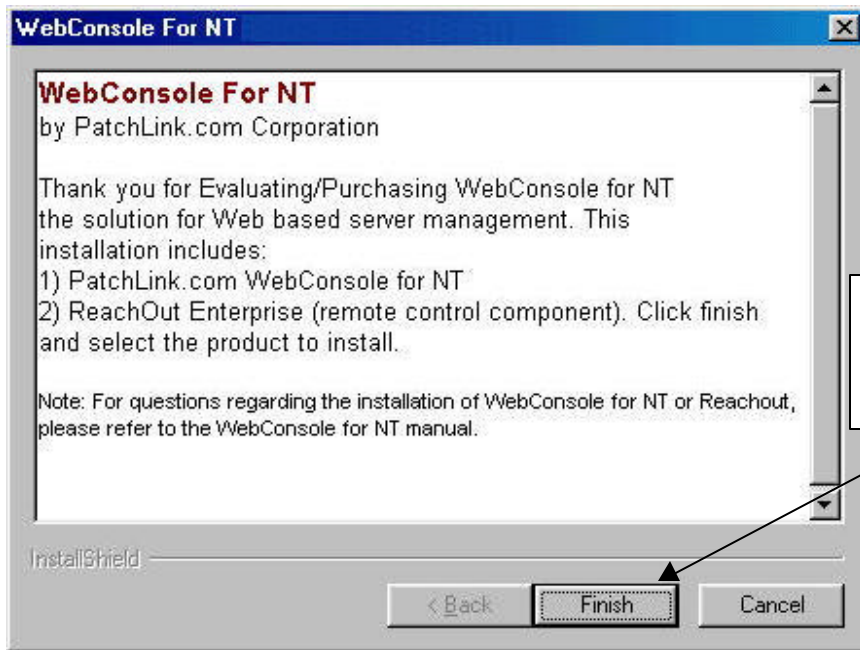
- **Microsoft Windows NT 4.0 Server Operating System**  
Server must be a member of a domain. Server can be a PDC, BDC or a member server.
- **Microsoft Windows NT Service Pack 5.0 or higher**
- **Microsoft Internet Explorer 4.0 or higher**
- **Microsoft Internet Information Service (IIS) 4.0 Installed by using Option Pack 4**

For best results, turn off your web server during installation. You can do this by opening Services located on Windows Start/Settings/Control Panel/Services. Highlight **World Wide Web Publishing Service** and then click the Stop button.



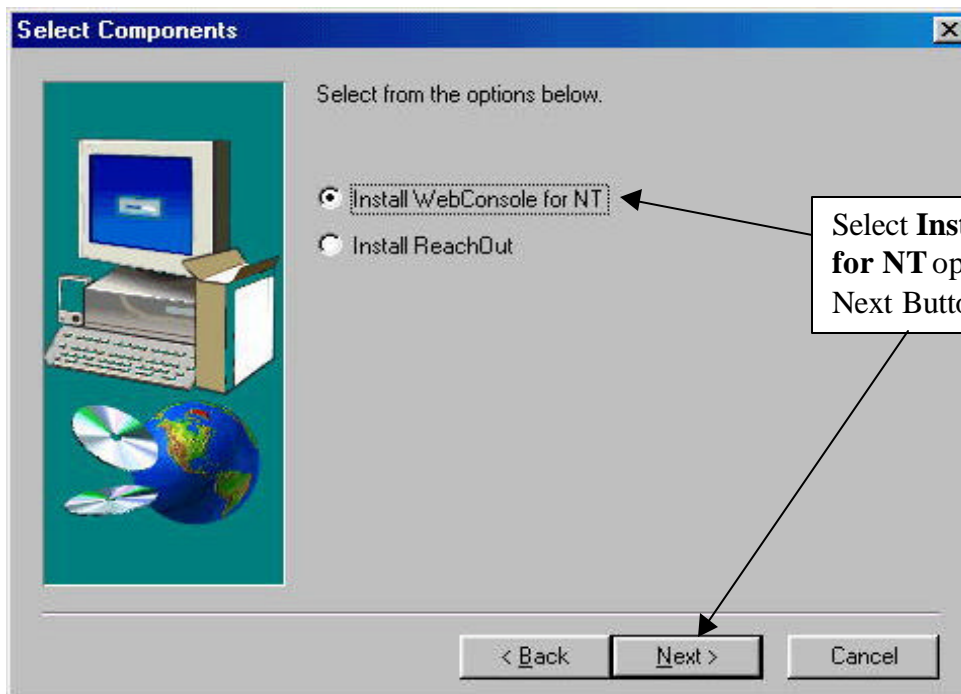
Download the executable file from **Patchlink.com**'s web site to your server's desktop. Next, launch the **WebConsole for NT** executable.





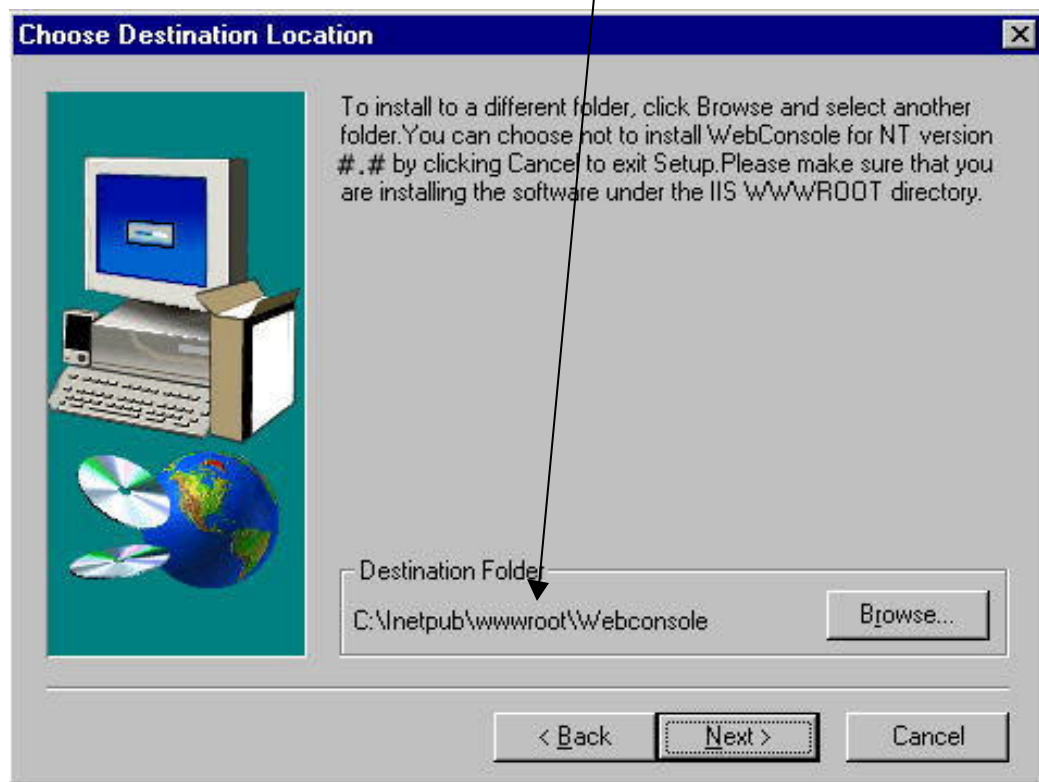
After reading the **WebConsole for NT** Introduction screen, click the Finish button

The **WebConsole for NT** installation program will start unpacking files.

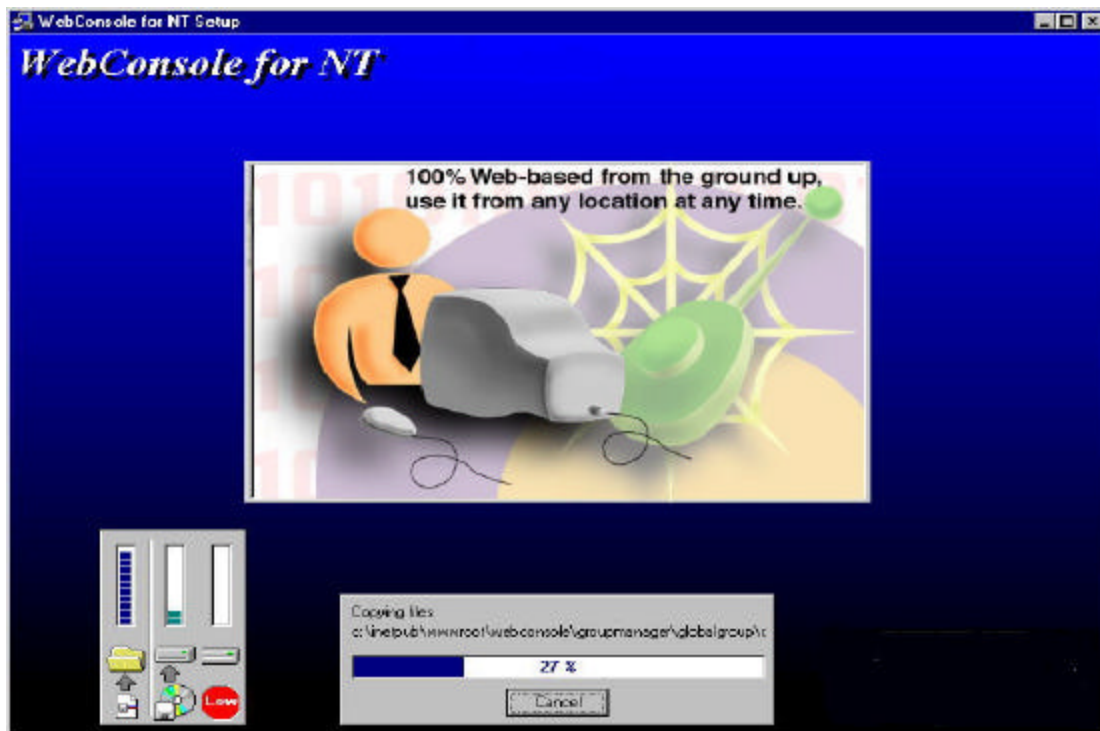


Select **Install WebConsole for NT** option, then click the Next Button.

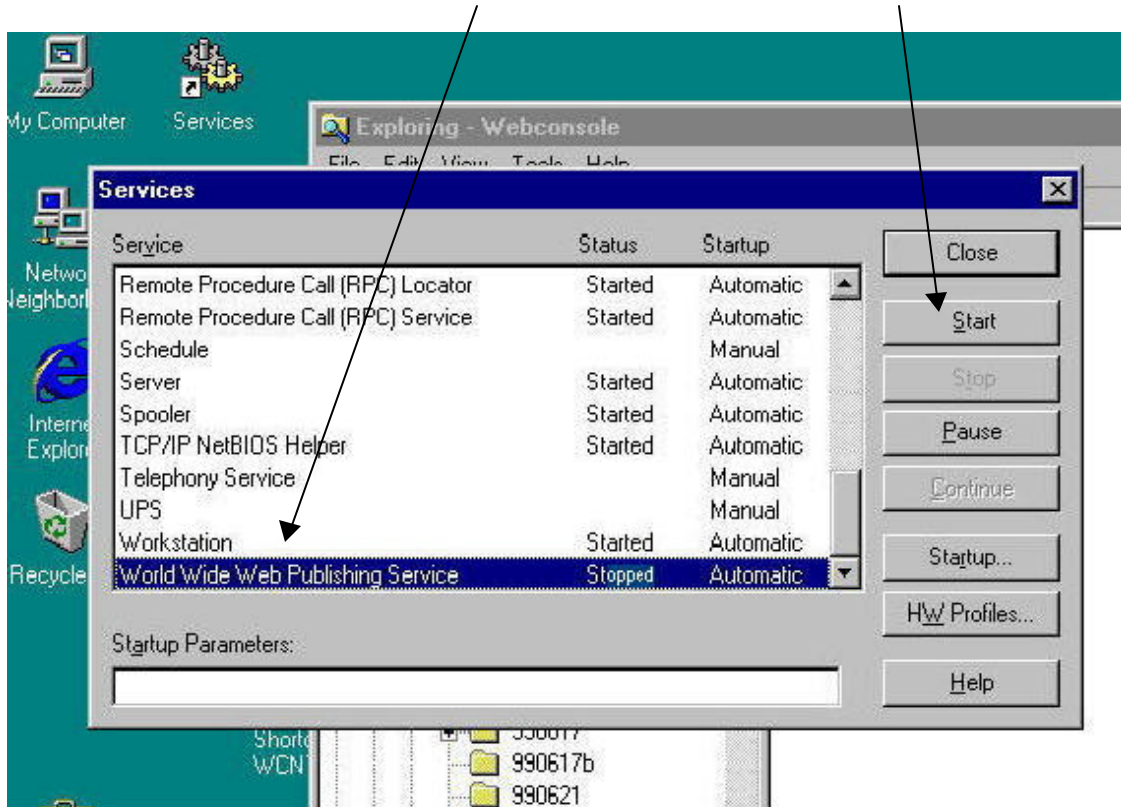
**WebConsole for NT** will install to location C:\inetpub\wwwroot\Webconsole and it is recommended to use this default. However, the destination can be changed so long as **WebConsole for NT** stays within the C:\inetpub\wwwroot\ Directory. Click Next to continue.



**WebConsole for NT** will proceed with the product installation.



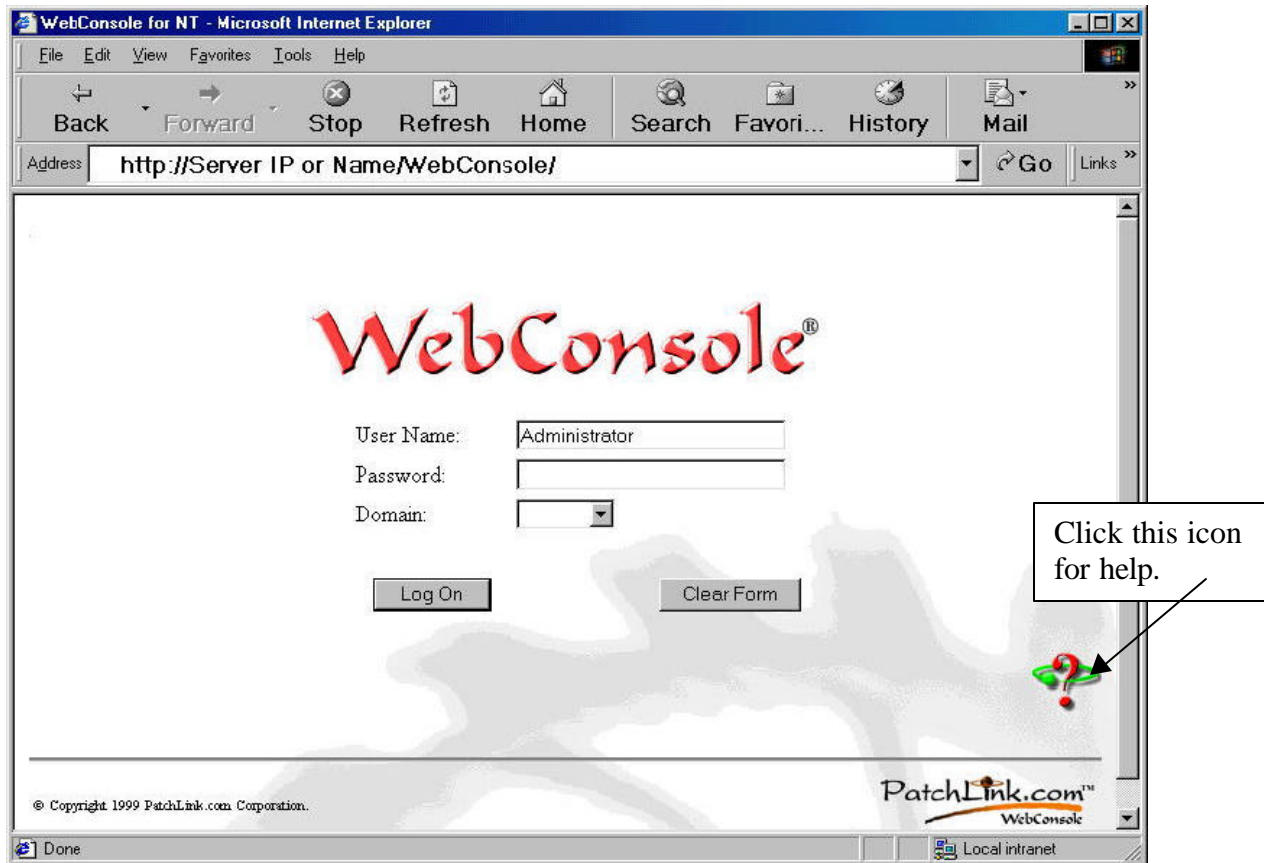
Once the **WebConsole for NT** installation has finished restart the web server. You can do this by opening Services located on Windows Start/Settings/Control Panel/Services. Highlight **World Wide Web Publishing Service** and then click the Start button.



Open your web browser, either IE 4.0 or higher or Netscape 4.05 or higher. Type in the address as either **http://Server IP/WebConsole** or **http://Server Name/WebConsole** of the server that you have **WebConsole for NT** installed.



You should see an Authentication Screen similar to the one below. **WebConsole for NT** utilizes inherited rights from your domain so you will use the same admin rights that you use daily. **WebConsole for NT** works with **SSL** and **RSA logic**.



**IMPORTANT TO KNOW:** When you launch **WebConsole for NT** it will launch/start **WCNT schedule service**, which will begin to take an inventory of Domains and Machines across your network starting with the default domain (the one in which you just installed **WebConsole for NT**).

**NOTE:** *The amount of time that it takes **WebConsole for NT** to search and inventory your domains and machines will depend upon several factors: size of network, number of domains, number of machines, number of users and traffic on the network.*

The License.asp screen will prompt you to enter the **WebConsole for NT** Serial Number supplied by your sales representative.



You will be prompted to choose the servers you would like **WebConsole for NT** to manage.

WebConsole for NT - Microsoft Internet Explorer

Address <http://Server IP or Name/WebConsole/License.asp>

# WebConsole®

Please add/remove the machines you would like WebConsole to manage

Domain: DOMAIN\_1 [Add] [Delete]

Machines on the Domain:

- SERVER\_1
- SERVER\_2
- SERVER\_3

[Add] [Delete]

[Add] [Remove]

Licensed machine(s)

The total license is 3  
Licenses available 3

[LOGON] [Change License]

Notice you will have a choice of Domains and then Machines on the Domain selected.

You can MANUALLY ADD a machine not in a domain by using this feature.

Highlight the machine you want to manage on the left and click on Add.

Once you have selected which servers you will be managing, you can LOGON to the selected domain.

If there is a need to change licensing information or the servers that **WebConsole for NT** manages, you can access the licensing page at:  
<http://Server IP or Name/WebConsole/License.asp>.

## WebConsole for NT ADDITIONAL DOCUMENTATION:

1. **WebConsole for NT Help** documentation: Click the help icon on the **WebConsole for NT** screen or Logon to **WebConsole for NT** and click the Help tab.
2. Online **WebConsole for NT FAQs** address: <http://www.Patchlink.com/wcntfaq.html>
3. Online **WebConsole for NT Product Information** address: <http://www.Patchlink.com/wcnt.html>